



**Connecticut
Orchid
Society
Newsletter**

Affiliated with the American Orchid Society

January 2011

52 Years & Growing

Next Meeting

Date: Wednesday, Jan. 12, 2011

Time: 7:00 P.M. Socializing begins. Show & Sale Tables open.
7:30 P.M. Business meeting begins followed by the evening's featured event.

Place: Farmington Senior Center
321 New Britain Ave., Unionville, CT
(See pg. 33 for directions.)

Program: *"Mount Your Own Orchid" Workshop*

Workshop will be conducted by COS members.

There is a \$20 materials fee— mounts, plants, fishing line, sphagnum moss, hot glue, etc. will be provided. Participants will also receive a Step-by-Step Full Color Handout.

Meeting Status: For notice of last-minute or inclement weather cancellation, visit our website www.ctorchids.org or call Judy Becker at (860) 435-2263.

Contact us

Write Connecticut Orchid Society, Inc.
P.O. Box 198, Farmington, CT 06034-0198

E-mail President Cheryl Mizak president@ctorchids.org
Web Master Deidra Crewe dcreweorchids@yahoo.com
Editor Sharon SmithDelisle editor@ctorchids.org

Connecticut Orchid Society (COS) is an incorporated non-profit 501 (c) (3) organization founded in 1959. Please consider making a charitable contribution to COS. Most donations made to COS are tax deductible.

**COS Membership Information : \$20/yr. Individual \$25/yr. Family
New category: \$200 Individual or \$250 Family Lifetime Membership (never pay dues again!)**

**Contact Membership Chairperson Mary Rampone at (860) 649-7952 for more details.
A membership application is located on pg. 34 for your convenience.**

Connecticut Orchid Society Mission Statement

The Connecticut Orchid Society is an incorporated, non-profit association for the preservation and extension of knowledge concerning the conservation, ecology, science, cultivation, hybridization, appreciation and uses of orchids; and to carry on such activities as may be necessary or desirable to effectuate such purposes.



Inside this Issue --- Jan. 2011 Volume LI | Issue I

REGULAR FEATURES

Next Meeting/Contact Us.....	1
COS Membership Information	1
COS Officers and Posts – 2010.....	3
Mentor List.....	3
Calendar of Coming Events	4
AOS Corner.....	5
Editor’s Announcements & Reminders.....	6
This Month’s Featured Event	7
President’s Message.....	8
Monthly Meeting Minutes	9– 10
Show Table & Photographs.....	11 – 12 & 18–19
From the Archives.....	14
News, Notes & Happenings.....	15
Out Reach Programs.....	16
Library News.....	16
Conservation & Appreciation— <i>Bubble Structure Enthralls</i>	20–21
Orchid Show Announcements.....	30 – 32
Map and/or Directions	33
Membership Application.....	34

SPECIAL FEATURES

A Touch of Class — Four Drawings from May 1981 AOS Bulletin.....	17
Poetry Corner ‘ <i>Mad Max</i> ’ By Joe Hertz	25
Orchid Speak 101: <i>Orchid Nutrition for Winter</i> By Susan Jones	22–24
Beginner’s Corner: “ <i>Super Resupinate</i> ”, By Larry Kuekes.....	25
Tips & Tricks.....	26
January Checklist, By James Rose & Ned Nash.....	27–28
Trivia	29

Connecticut Orchid Society Officers and Posts -- 2010

PRESIDENT	<i>Cheryl Mizak</i>
VICE-PRESIDENT	<i>Sharon SmithDelisle</i>
TREASURER	<i>Judy Becker</i>
DIRECTOR -AT- LARGE	<i>Morgan Daniels</i>
DIRECTOR -AT- LARGE	<i>Nan Stockmal-Peschel</i>
RECORDING SECRETARY	<i>Judy Arth</i>
MEMBERSHIP CHAIRPERSON	<i>Mary Rampone</i>
CORRESPONDING SECRETARY	<i>Sharon SmithDelisle</i>
EDITOR, LIBRARIAN/HISTORIAN	<i>Sharon SmithDelisle</i>
AOS REPRESENTATIVE	<i>Sam Hinckley</i>
CONSERVATION CHAIRPERSON	<i>Open</i>
SPECIAL EVENTS COORDINATOR	<i>Cheryl Mizak</i>
REFRESHMENT CHAIRPERSON	<i>Open</i>
WEB MASTER	<i>Deidra Crewe</i>
WEB TECHNICAL ADVISOR	<i>Joseph Linger</i>

Mentor List

The following COS members are available to answer your culture questions and help you with any orchid growing problems you may have:



Judy Becker judybecker40@att.net Greenhouse growing methods: Wide variety of species & hybrids

Charlie Boos charlieb1962@yahoo.com Greenhouse & under lights growing methods: Cattleyas, Vandas, Dendrobiums, Sophronitis & hybridizing

Sam Hinckley samueltinckley@comcast.net Windowsill growing methods: Species & hybrids

Joe Linger jlinger@snet.net Greenhouse, outdoors & under lights growing methods: Species & hybrids

Sharon SmithDelisle editor@ctorchids.org Under lights & windowsill growing methods: Bulbophylums, Cymbidiums, Dendrobiums, Paphiopedilums, Miltoniopsis & mixed genera.

David Tognalli dtog54@sbcglobal.net Windowsill & outdoor growing methods: Warm growers, Cattleyas, Dendrobiums & mixed genera.

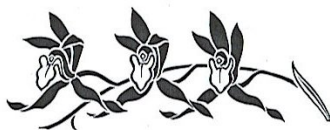
Membership Policy

Membership is open to anyone interested in orchids. Members join the Society by payment of annual dues. Memberships may be individual, student, family, life or honorary. Honorary membership is for life and is made by nomination of the Board of Directors and majority vote of the membership present at a regular meeting.

Upcoming Events



- Jan. 12 Connecticut Orchid Society Monthly Meeting:** *Mount Your Own Orchids Workshop*, 7:30 pm, Farmington Senior Center, Unionville, CT.
- Jan. 29 ~ 30 Cape and Islands Orchid Society Orchid Odyssey Show & Sale:** 22nd Annual Orchid Show at The Resort & Conference Center, Hyannis, 135 Scudder Ave., Hyannis, Cape Cod. Visit www.caios.org for more details.
- Feb. 7 & 14 Old Saybrook Adult Education Class, "Basic Orchid Growing":** COS member Sharon SmithDelisle will conduct the classes.
- Feb. 9 Connecticut Orchid Society Monthly Meeting:** *"Evolution of the Orchid"*, presented by Robert Aldrich, owner of The Inn at Weston, Weston, VT., 7:30 pm. Meeting location TBA.
- Feb. 10 ~ 13 Deep Cut Orchid Society Annual Orchid Show:** 14th annual show & sale at the Dearborn Market, Holmdel, NJ. Visit www.deepcutorchidsociety.org for more details.
- Feb. 11~13 New Hampshire Orchid Society 20th Annual Show & Sale:** *"Celebrate Orchids"*, Radisson Hotel, Nashua, NH. Visit www.nhorchids.org for details.
- Feb. 24 ~ 27 Connecticut Flower & Garden Show:** *"Capture the Magic"*, 30th Annual Show, Connecticut Convention Center, Hartford, CT.
- Mar. 4 ~ 7 Van Wilgen's Garden Center:** *"Escape to Spring"*, Gardening expo with many local vendors. COS will have an information booth at this event. North Branford, CT.
- Mar. 9 Connecticut Orchid Society Monthly Meeting:** TBA
- Mar. 12 Mid-Hudson Orchid Society Spring Show & Sale:** *"Spring 2011"*, Union Presbyterian Church, 44 Balmville Rd., Newburgh, NY, 11:00 Am ~ 3:00 PM. FREE ADMISSION. Call (845) 294-1000 for more information. See flyer in this issue, pg. 36





January AOS Corner

By Lynn Fuller

What does it mean to be an affiliated society of the American Orchid Society? Why should orchid societies be affiliated? I am often asked this question in conversations about the AOS. First and foremost, being an Affiliated Society affords your society a membership in the American Orchid Society and a subscription to *Orchids*. Society membership provides access to a number of video and slide shows. The Education Committee of the AOS is working on production of more shows and updating some of the outdated video and slide productions. For a listing of the available programs, check out the website www.aos.org on the Affiliated Society page. Your society may borrow any of these programs.

A program that AOS is starting to implement on a trial basis will be useful to your society's recruiting efforts. If your society sends the contact information (preferably email) of any new member (forward to affiliated_societies@aos.org), that new member will receive a subscription to the free e-mail newsletter as well as a copy of a recent issue of *Orchids* magazine with an invitation to join the American Orchid Society. A membership in the AOS will complement your local society membership.

As an Affiliated Society, you have your own AOS Representative. That AOS Representative acts as the liaison between your society and the AOS. They should have information and membership materials relating to the AOS at each of your meetings. The only requirement of that AOS Representative by the AOS is that they also have their own membership in the AOS. In addition, the Affiliated Societies Committee holds a membership breakfast at each of the two member meetings where we exchange ideas relating to societies' issues, programs and the like.

Of course, in order to provide AOS judging at any shows, the sponsoring society or group must be an Affiliated Society.

I look forward to working with you all through the upcoming year. If any of you have any comments or suggestions on how the American Orchid Society may better serve its affiliated societies, please feel free to contact me (you may reach me at affiliated_societies@aos.org).

(This article provided by Susan Taylor, Orchids Editor, BellaOnline, Kiva.org—Loans That Change Lives)



Around the Greenhouse -- *Editor's keikis*

Letters to the editor are always welcome. Your feedback about any issue that is on your mind will help us improve our Society, as well as the newsletter. Please write to me at editor@ctorchids.org or 38 Robinhood Rd., Danbury, CT 06811.

The deadline for submissions to the Feb. issue of the newsletter is Jan. 21st..

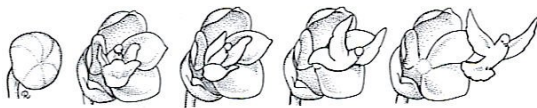


New Member Welcome ~ It's a pleasure to start off a new year by announcing the addition of a new member to our ranks. Please extend a warm welcome to Evelyn Ruiz who joined COS on January 3rd.

Don't Forget Your Membership Dues are Due ~ Support your society and renew your dues, today. March 1st is the cut-off date, but why wait. There is a membership coupon at the back of this newsletter—just tear it out, fill-in the appropriate details, make out a check payable to COS and drop them in the mail. Done!

Start a Plant Log ~ If you haven't already done so, January is the logical month to start keeping track of your collection activities. Map out a fertilizing schedule for the year, determine target dates for applying greenhouse shade and for repotting of specific groups. Document the blooming of your plants through the year. Record the number of flowers, measure the length of the inflorescence and the time period and number of days (including the peak) your plant was blooming. It's even better to accompany this information with a photo if you can. This information will help you predict (approximately) when to expect flowers in the future and can be a good indicator of whether your plant is improving or declining from one year to the next. If you, like me, have so many plants that it's hard to keep track of them all, then this exercise takes on more importance. It needn't start as a huge project, just once-a-month inspection of who's blooming recorded in a notebook is the best way to get started. *(By Thomas Mirenda, reprinted from the American orchid Society bulletin "Orchids", January 2010, pg. 10)*

Vignettes ~ Unless otherwise noted, all vignettes in this newsletter are the work of Marion Ruff Sheehan.



January's Featured Event

"Mount Your Own Orchid" Workshop



*Presented by COS Members
Roger Heigel
Ann & Phil Jesup
Alan Mizak
Sharon SmithDelisle*

\$20 Materials Fee

(includes selection of orchids suitable for mounting, cork slab or mesquite mount, care instruction booklet, moss, fishing line, hot glue, hanging wire, etc.

Learn techniques to properly mount an orchid & how to care for mounted orchids. We'll show you how to do it!

You are welcome to bring your own plant for mounting (not to exceed 6 inches in height) or purchase a plant from us (included in the materials fee).

Please R.S.V.P. to Cheryl Mizak (203) 264-6096

President's Message



President Cheryl Mizak

Happy New Year

I want to thank everyone for taking the time to vote. Even though the slate was running unopposed it is important to support the society.

By now you are probably seeing some new growths starting on some of your plants. Time to repot. Make sure to do an inventory of the repotting supplies you will need. Repotting supplies will be available for purchase at Wednesday's meeting.

COS will be having a display at the Cape & Islands show Jan 28-30. We will be needing plants for display and another member to help with Sunday take down. Please contact Rick Brown.

This month you will be able to try your hand at mounting and caring for a mounted orchid. You will be surprised how easy they are to care for.

~ Cheryl Mizak
President



December's Meeting Minutes



Judy Arth
Corresponding
Secretary

Connecticut Agricultural Station, Dec. 15, 2010

The meeting was preceded by a delicious pot luck supper provided by the many good cooks in our membership.

After the festive meeting and greeting and eating, the business meeting was called to order by Cheryl Mizak at 7:30 PM.

The meeting was brief with just a few announcements:

- ◆ On January 12, 2011 Debbie Landry will be speaking at a garden club about orchids.
- ◆ January 27—30 is the Cape and Islands Show.
- ◆ February 10—13 is the New Hampshire Show and The Deep Cut Orchid Show—both are on the same weekend.
- ◆ February 24—27 is the Connecticut Flower Show in Hartford, CT

Our next meeting will be held at the Farmington Senior Center on January 12th. It will be a workshop on mounting orchids. We will ask anyone interested to sign up. There will be a material fee of \$20.00 which will cover the new plant and mounting materials. We will only be ordering plants for those who sign up. We will be discussing how to mount and how to care for your mounted orchid. You are welcome to bring your own orchid for mounting, but your plant should not exceed 6 inches in size.

This is renewal time for current members. See Mary Rampone, Membership Chair and update your contact information. The \$20.00 dues automatically covers an electronic copy of the newsletter. If you wish to have a hardcopy of the newsletter mailed to you, please add \$10.00 to cover printing & postage costs. Our dues cover speakers fees, meeting location rentals and other miscellaneous charges.

The Nominating Committee was introduced – Dave Tognalli and Ann Jessup. The third member is Larry Kuekes. He has moved to Hawaii but continues to remain active in the Society and helped put together this year's slate of officers.

The proposed slate of officers' is as follows:

President – Rich Brown	Vice President – Cheryl Mizak
Treasurer – Judy Arth	Secretary – Carla Koch
Directors at Large – Roger Heigel and Dottie Kern	



Please be sure to vote. The results will be announced at the January 12th meeting.

We would like to ask for a volunteer to help with a new job as Electronic Corresponding Secretary whose job it would be to send out the e-newsletters. We are growing by leaps and bounds and this would be a very specific job.

Cheryl as V-P will need help this coming year. COS is getting a lot of interest from other groups to come and speak about orchids. We will need volunteers to help with these outreach requests.

Then we proceeded to the year-end Certificate of Appreciation Awards to those people who gave time and effort the past year to help COS be bigger and better. Many of our members donated a lot of time and effort in such things as - manning outreach programs throughout the year, submitting newsletter pictures and articles, plant sitting for the orchids we sell at meetings, holding meetings, and many other outstanding projects. Certificates were presented to all of the following members with a thank you from Cheryl and COS:

Judy Arth, Judy Becker, Charlie Boos, Rick Brown, Deidra Crewe, Joyce & Morgan Daniels, Richard Delisle, Al DeLuca, Liz Dwyer, Roger Heigel, Sam Hinckley, Ann & Phil Jesup, Dottie Kern, Carla Koch, Joyce & Alex Kopper, Larry Kuekes, Debbie Landrey, Jenny Lane, Jim Michlewski, Alan & Cheryl Mizak, Mary Rampone, Ann Marie Riemer, Sharon SmithDelisle, Dave Tognalli,



After the meeting, we reviewed the beautiful Show Table with Judy Becker's and Phil Jesup's knowledgeable descriptions. Phil and Ann brought a wonderful assortment of colorful blooming plants that were perfect for this Christmas season. It was such a treat to see.

At the end of the meeting we had a wonderful mini- auction of a variety of plants and everyone went home with some fond memories and renewed Christmas Spirit.

~ Judy Arth
Recording Secretary

December Show Table

Genus	Plant	Owner	Culture
<i>Ascocenda</i> (<i>Ascda.</i> Fuchs Gold x <i>V. denisoniana</i>)	Crownfox Honey Gold 'Tangerine'	HCC/AOS Jesups	i , g
<i>Brassocattleya</i> (<i>C.</i> Myron A. Hofer x <i>B/c.</i> Mount Hood)	Moon Miss 'Lunar Dawn'	HCC/AOS D. Tognalli	i , w
<i>Cattleya</i> (<i>C. tenebrosa</i> x <i>C. dichroma</i>)	Burmese Ruby	Jesups	i , g
<i>Cyclatonia</i> (<i>Ctna.</i> Quest's Millennium x <i>Enc. randiana</i>)	Yolanda	Jesups	i , g
<i>Cycnodes</i> (<i>Cycnoches lehmannii</i> x <i>Cycnoches sinuate</i> x <i>Mormodes</i>)	Wine Delight 'J.E.M.'	FCC/AOS J. Becker	i , g
<i>Dendrobium</i> (<i>convolutum</i> x <i>johnsoniae</i>)	Green Mist	Jesups	i , g
<i>Diacattleya</i> (<i>C.</i> Orglades Splash x <i>Diacrium bicornutum</i>)	Chantilly Lace 'Twinkle'	HCC/AOS Jesups	i , g
<i>Doritis</i>	<i>pulcherrima</i> blue form	J. Becker	i , g
<i>Hawkinsara</i> (<i>Sl.</i> Psyche x <i>Ctna.</i> Keith Roth)	Lisa Hasegawa	Jesups	i , g
<i>Masdevallia</i> (Angel Tang x Canary)	Golden Sun '#3'	Jesups	c , g
<i>Masdevallia</i>	<i>ignea</i>	Jesups	c , g
<i>Masdevallia</i>	<i>mejiana</i>	Jesups	i , g
<i>Masdevallia</i> (<i>strobellei</i> x Angel Tang)	Mem. Jose Strobel	Jesups	c , g
<i>Masdevallia</i> (<i>sanctae-inesae</i> x <i>tonduzii</i>)	Sunspot	Jesups	i , g
<i>Odontioda</i> (Durham Castle x Wearside Pattern)	Alyssa McLaughlin	Jesups	c , g
<i>Paphiopedilum</i>	<i>spicerianum</i>	J. Becker	i , g
<i>Paphiopedilum</i>	<i>spicerianum</i>	Jesups	i , g



<i>Phragmipedium</i>	<i>Don Wimber</i> (Eric Young (4N) x <i>besseae</i> (4N))	Jesups	i , g
<i>Pleurothallis</i>	<i>flexuosa</i>	Jesups	i , g
<i>Potinara</i>	Golden Circle (<i>Slc.</i> Circle of Life x <i>Blc.</i> Goldenzelle)	Jesups	i , g
<i>Potinara</i>	Marlene Lundquist (<i>Pot.</i> Classy Lady x <i>Blc.</i> George King)	'Orange Delight' AM/AOS D. Tognalli	i , w
<i>Scaphosepalum</i>	<i>ova-avis</i>	Jesups	i , g
<i>Sophrocattleya</i>	Cosmos 'Laina' AM/AOS (<i>S. coccinea</i> x <i>C.</i> Cherry Chip)	Jesups	i , g
<i>Sophrolaeliocattleya</i>	Final Touch 'Mendenhall' AM/AOS (<i>Slc.</i> California Apricot x <i>Lc.</i> Drum Beat)	Jesups	i , g
<i>Sophrolaeliocattleya</i>	Fire Magic (Tokyo Magic x Fire Fantasy)	Jesups	i , g
<i>Sophrolaeliocattleya</i>	Love Castle 'Kurenai' AM/AOS (<i>Sl.</i> Psyche x <i>Lc.</i> Jose Dias Castro)	Jesups	i , g
<i>Vascostylis</i>	Pine Rivers 'Deep Sea' (<i>Ascda.</i> Peggy Foo x <i>Rhynchostylis coelestis</i>)	Jesups	i , g

Culture is as noted:

c – cool
w – warm

i – intermediate
g – greenhouse



***Slc* Fire Magic
(Tokyo Magic x Fire Fantasy)
Brought to December Show Table by the Jesups.**



Top: New member Pam Kurimai is obviously enjoying the party!
Middle: Whenever we find Mary Rampone and Rick Brown together, trouble's afoot! Wonder what they're hatching out now?
Bottom: Dottie Kern is listening intently while Dave Tognalli imparts some words of orchid wisdom.



Two lovely ladies enjoy the holiday party — Mrs. DeLuca on the left and Cheryl Mizak on right.

From the Archives

the way we were....

January 1981 ~ The COS meeting was held at the Connecticut Agricultural Experiment Station in New Haven. John Passander conducted a replating demonstration/workshop which taught attendees how to properly deflask green cattleya seedlings. Dues were due as usual in January— \$6.00 for individual and \$9.00 for family memberships. A \$50 donation was approved for the AOS Education & Research Fund in memory of COS member Helen Carlson.

January 1991 ~ It was the COS meeting that wasn't. Due to freezing rain, the meeting was cancelled. Carla Koch sent a letter to the editor outlining an "Organic Control" she had devised. In one pint of water she mixed 1 teaspoon of vegetable oil and 4 tablespoons of rubbing alcohol, which she shook well before applying. It acts like an oil emulsion without the use of dangerous chemicals. She used this concoction for about one year before reporting that she had excellent success. It killed mealybugs and scale very well. Next time you see Carla at a meeting, ask her if she still uses her "organic control".

January 2001 ~ The COS meeting was held at the Knights of Columbus, Newington, CT. The program was an AOS slide show "In Vitro Propagation of Orchids" by Dr. K. S. Xavier, which covered somatic (non-sexual) reproduction of orchids. A new COS monthly program was instituted "Orchid Clinic for Problem Plants". Members bringing problem plants for this program were reminded not to mix their plants with the Show Table Plants.

News, Notes & Happenings

Announcement!

The Surgery is Open & the Doc is In ~ Beginning with the January 12th meeting, new members with questions about their orchids can bring their plant to the meeting. A table will be set up at the back of the room and the “Doctor”, an experienced COS member, will look your plant over and make some suggestions about what you can do to improve the plant’s health. This new program will be available for one hour before the business meeting begins—6:30—7:30 PM. Please feel free to ask the doctor about any culture or repotting questions

Start of a new season — volunteers needed ~ The new year means a new round of affiliated societies shows are coming up fast. Already we have been invited to four events: The Cape & Islands Orchid Society Show and Sale, Jan. 27—30, the New Hampshire Orchid Society Show and Sale, Feb. 10—13 and the Deep Cut Orchid Society Show and Sale (on the same weekend). Then there is the Connecticut Flower Show in Hartford on Feb. 24—27. A very busy couple months. While the board members will all be participating in these events, each event requires set up and take down. It is asking too much for the Board of Directors to do all of the work. Please contact Cheryl Mizak at (203) 264-6096 if you can help out. You will not be asked to go to an event alone or to do all the work by yourself. But many hands make for light work. By participating in these events, we can expect that these societies will participate in our show come Oct., which will make our event just that much bigger and grander.



On left: Dave Tognalli & Judy Becker acted as auctioneers for the Dec. mini-auction, which was enthusiastically participated in by members with lots of holiday spirit. The auction netted COS several hundred dollars profit.

Out Reach Programs

Cape & Islands Orchid Society Show and Sale, *Orchid Odyssey*, January 27—30, The Resort & Conference Center, Hyannis, 135 Scudder Avenue, Hyannis, Cape Cod ~

As they have for many years, CAIOS has asked COS to participate at their annual show. Volunteers are needed to set up and take down our display.

New Hampshire Orchid Society Show and Sale, *Celebrate Orchids*, Feb. 10—13, Radisson Hotel, Nashua, NH ~

Once again, the New Hampshire Society has asked COS to participate in its annual show. Volunteers are needed to help with set up & take down.

Deep Cut Orchid Society Show and Sale, Feb. 10—13, Dearborn

Market, Holmdel, NJ ~ COS has been invited for the first time to participate at this show. Rick Brown & Cheryl Mizak are working on our display. Volunteers are needed to help with set up & take down.

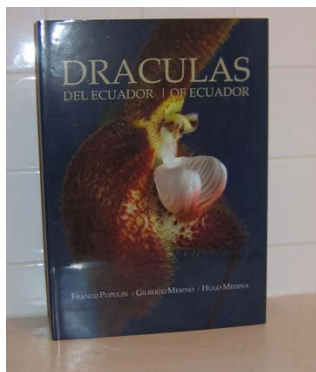
Old Saybrook High School Adult Education “ Basic Orchid Growing”,

Feb. 7 & 14 ~ Sharon SmithDelisle will conduct two classes about basic orchid growing. The program is open to residents of the Old Saybrook township.

Connecticut Flower Show, Hartford, CT , Feb. 24—27 ~ Volunteers are needed to man our booth and hand out information about COS each day of the show.

Library

News from the Catts hiding in the stacks

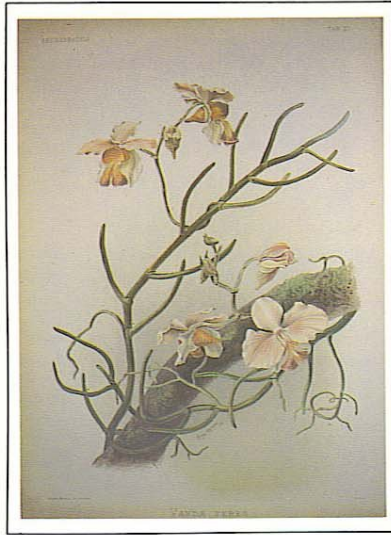
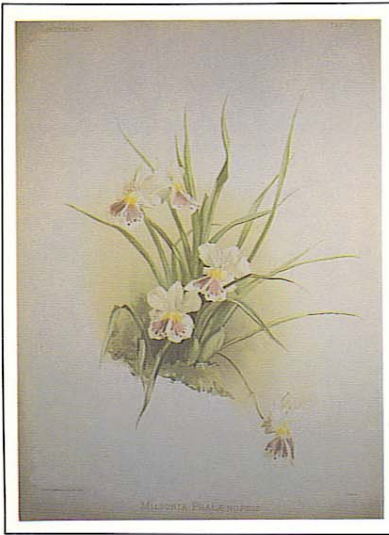


Draculas Del Ecuador/of Ecuador

By Franco Pupulin, Gilberto Merino & Hugo Medina
University Alfredo Perez Guerrero (UNAP) and Ecuagenera Orchids of Ecuador, 2009

COS purchased this new book for our library. Our library has little or no new information about the culture of Draculas and this very current, informative book will be of great use to growers who want to try the challenge of Dracs. Please contact librarian Sharon SmithDelisle if you would like to borrow this book.

A Touch of Class ~ Beautiful Art from the Past



ABOVE, LEFT — *Miltonia phalaenopsis*. Plate 79, series II. H.G. Moon, artist; J. Mansell, lithographer. Moon's ability to capture the character of a species was unequalled. ABOVE, RIGHT — *Vanda teres*. Plate 27, series I. G. Hansen, artist; J. Mansell, lithographer.

BELOW, LEFT — *Laelia anceps stella* and *L. anceps barkeriana*. Plate 48, series I. H.G. Moon, artist; J. Mansell, lithographer. BELOW, RIGHT — *Odontoglossum hebraicum*, Plate 37, series I. A. Loch, artist; J. Mansell, lithographer.



Reprinted from AOS Bulletin, May 1981



***Diacattleya* Chantilly Lace 'Twinkle' HCC/AOS
(*C. Orglades Splash* x *Diacrium bicornutum*)
Brought to Dec. Show Table by the Jesups**



***Sophrolaeliocattleya* Love Castle 'Kurenai' AM/AOS
(*Sl. Psyche* x *Lc. Jose Dias Castro*)
Brought to Dec. Show Table by the Jesups**



Masdevallia Golden Sun '#3'
(Angel Tang x Canary)
Brought to December Show Table by
Ann & Phil Jesup. This is one of their
cool growers.



Paphiopedilum spicerianum
Brought to Dec. Show Table
by the Jesups.



**Ann Jesup and Dave Tognalli announce the proposed slate of officers for
the upcoming election.**

Bubble Structures Enthrall Streets of Paris

~ Bubble hosts hundreds of orchids ~

Paris has a new feather in its cap. The two new bubble-like structures which house a garden in one and a jungle in another have breathed a fresh air onto the streets of Paris, standing unique amidst the other concrete buildings.

Dutch Flower Council wants Parisians to get their "15 minutes of green!"



The bubble gardens were sponsored by The Dutch Flower Council to celebrate the popularity of houseplants in Paris, and were designed by Amaury Gallon. These were installed from November 26th through the 28th in Gare Montparnasse, Place Saint Germain, Bercy Village and Place Colette. The transparent structures serve as walk-in greenhouses as well as spaces of reverie in the urban region.

The bubble that hosts the garden has hundreds of orchids woven into the metal structure that act as frames. The interior of the bubble features igloo shaped rooms.



The exhibition is titled "Ma Bulle, Ma Plante, & Moi" meaning My Bubble, My Plant & Me displayed an awesome picture of utilizing the indoor plants. The bubbles are enjoying attention from a large number of viewers.

The organizers, inspired by Andy Warhol's saying that everyone gets their "15 minutes of fame", wanted all who visited the bubbles to have their "15 minutes of green!" Dutch Flower Council has also come up with an interesting statistic.



Conservation & Appreciation

They say that 17% of respondents have plants in their office, and 16% have plants both at home and work. The most striking aspect regarding the study is that the majority of non-plant owners were in the youthful age group of 18–24.

Posted by Siyahi in [Design, Earth, Lifestyle, Nature](#) Bubble Structures Enthrall Streets of Paris—Green Packs, Dec. 21, 2010, www.greenpacks.org



Mad Max

By Joseph M. Hertz

*take a moment,
oh, let's converse;
stop & enjoy
some orchid verse.*

Walking on the beach, in the sand near the ocean
A bikini-clad woman all covered in lotion
So overwhelming, so sexy, her scent - cocoa butter
I found myself speechless, could at best barely stutter
She sat down right near me, in the sun on the sand
The air filled with coconuts while I burned and she tanned
A touch of mint I did catch while she drank from her drink
Was added for color and flavor and I think
She sipped from the straw in her Pina Colada
And then all was gone! No bikini, no nada!
The beach – it was gone and so was the sand
No ocean, no sunshine, no refreshments at hand.
No woman doused with lotion all glistening and gleaming
I was at home all alone. Damn! I must have been dreaming!
I opened my eyes and nothing was there,
But the scent of coconut – it still filled the air!
I grow orchids you see I guess I shoulda tol' ya
And there they were growing on my *Max. tenuifolia*
Counted flowers first five, there were ten, more like twenty!
Petals of maroon, lips of yellow and red polka-dots a plenty
Nothing is as it seems when it comes down to dreams
No beaches or oceans of blue,
Dreams are what they are and do what they do
And still, they often come true.



*(Reprinted from the Sept. 2001
COS Newsletter)*

Happiness is puttering around with our "little pretties" (as Steve Frowine likes to call them) and anticipating the arrival of those beautiful flowers. As our orchids grow and thrive so should our experience and knowledge about them. There is a tremendous amount of information that is important for understanding orchid culture and for growing better orchids. The goal of this column is to expand your general knowledge about the world of orchids and help you sound like a pro when you are talking to your fellow COS orchid growers. — Editor Sharon SmithDelisle

Orchid Nutrition for Winter

By Susan Jones

Planning for the optimum health and blooms of your orchids through winter and into spring is as important as their day-to-day care. Preparing now for orchids' seasonal nutritional needs can boost their resistance to damage from pests, disease and winter temperatures in the coming months.

Overall Health

Orchids will fare better in encounters with pests, diseases and temperature extremes if they are in a good state of overall health. A plant suffering from under or over-fertilizing, or stressed from lack of water is much more likely to be injured by any additional strain.


Orchids grown under less than ideal conditions are more likely to be a target for infection or infestation. Make an extra effort now to get plants and their greenhouses or growing areas in good shape for the shorter, darker days ahead by removing old foliage, weeds and dying flowers. An autumn cleanup can minimize or prevent the pest and disease problems that can crop up in the darker and more crowded conditions that often characterize the winter growing area.



General Nutrition

Light levels and temperatures begin to fall at this time of year, and your orchids' nutritional needs change accordingly. Orchid growers can take the following steps now to help prepare their collection for optimal health through the months ahead.

If your orchids will winter outdoors, fertilizing properly can help them resist cold, insect and disease damage, as well as give them two or three additional degrees of cold resistance. This can mean the difference between a

dead orchid and an unscathed plant or one that just loses a few leaves. 

Use a fertilizer low in nitrogen (which should be nitrate nitrogen, not urea nitrogen) and high in potassium; the numbers on the label should read something like 10-5-20. Watering and fertilizing should be reduced in frequency for the cooler autumn season, and orchids that bloom during the winter and into the spring should be given a couple of doses of blossom booster in October and November, bloom boosters should have a higher middle number, such as 10-50-10.

Ideally, this change in fertilizer should start by mid-November and continue through the end of January. This regime will sacrifice plant growth in December and January in favor of plant protection, but it can help keep the plant healthier overall.

Some growers recommend using Dyna-Gro Pro– TeKt (0-0-3), a liquid nutritional potassium-silicon supplement for plants. The product is supposed to improve heat and drought tolerance in orchids, as well as boosting their resistance to pests, disease and environmental stress.

Specific Genera

Seasonal nutritional needs differ among various orchid genera, and may diverge still further depending on local climatic conditions in disparate geographic regions. The following guidelines may require modification to accommodate individual growing conditions.

Cattleya

Watering and fertilizing frequency should be reduced, as the plants dry out more slowly in the cooler temperatures and shorter days.

Bud sheaths may yellow at this time of year as temperature fluctuations can cause water to condense inside the sheath. Should you notice condensation in the sheath, it should be opened or removed to allow the developing buds adequate air circulation and prevent bud blast caused by rots. Simply slit open the sheath and carefully peel it down toward the pseudobulb, exercising caution so as not to damage the delicate bud primordia within.

Dendrobium

Autumn and winter needs vary according to the species or hybrid parentage in this diverse genus. *Dendrobium phalaenopsis* and *Dendrobium canaliculatum* hybrids will benefit from a fertilizer with a low nitrogen formula for optimal flowering.

The leaves of *Dendrobium nobile* types and their hybrids begin to yellow and drop this time of year in preparation for their winter dormancy. Plants should be given plenty of light and good air circulation and kept dry from November through February. Mist occasionally if their canes become overly shriveled.



Paphiopedilum

Generally, these do not require a great deal of fertilizer. This is especially important with the cooler-growing bulldog types to reduce nitrogen levels at this time of year for better flowering. (Bulldog Paphiopedilums have plain green leaves as opposed to the mottled-leaf types. One of the best-known bulldog-type hybrids is *Paphiopedilum* Winston Churchill.) Watch for water accumulating in the growth around the sheath or for late-season warm spells, as either can rot the sheath and destroy the developing inflorescence. While Paphiopedilums should not be allowed to dry out entirely, water needs are significantly reduced in the cooler days. Overwatering can cause root rot or Erwinia problems.

Phalaenopsis

Growth slows and inflorescences begin to appear. Reduce watering and fertilizing frequency, and apply a bloom-boosting fertilizer. Many growers also recommend applications of Epsom salts (magnesium sulfate) to Phalaenopsis at this time of year to prevent yellowing and loss of lower leaves and to enhance blooming.

Once buds are evident on the inflorescences, keep temperatures and humidity consistent to prevent bud drop. Phalaenopsis grown in the greenhouse are especially prone to bud blast in February and early March, when the heat is still coming on at night and the greenhouse temperatures rise during the day.

Vanda

Aside from *Neofinetia falcata*, vandaceous orchids generally do not tolerate autumn and winter's cooler temperatures (below 60 ° F [16°C]) well and need to be carefully protected from chills.

Vandaceous orchids still need as much light as possible as the days become shorter and light levels fall. Reduce the frequency of fertilizing and watering to accommodate the slower growth period they are entering.

Starting the first week of October, Julie Rosenberg at R. F. Orchids in Homestead, Florida, recommends feeding vandaceous genera a blossom booster fertilizer exclusively, once a week for four to six weeks, at 1 teaspoon per gallon of water (15 ml to 3.8l), with normal watering between. In November, begin fertilizing every other week, using a balanced 20-20-20 fertilizer at 1 teaspoon per gallon (15 ml to 3.8l), substituting bloom booster every fourth feeding.

Preparing now for orchids' seasonal nutritional needs can mean happier, healthier and more productive plants year round.

Susan Jones was the editor of Awards Quarterly and Assistant editor of Orchids. American Orchid Society, 16700 AOS Lane, Delray Beach, Florida 33446. Reprinted from the OCTOBER 2003 issue of Orchids — The Bulletin of the American Orchid Society. Copyright American Orchid Society — www.aos.org.

Beginner's Corner

Editor's note: These columns were written by our previous editor Larry Kuekes and were run quite regularly over the past years. Larry's perspective is refreshing and some of our new members may welcome this introductory advice.

Super Resupinate

By Larry Kuekes

(This article first appeared in the Jan. 1997 newsletter)



Larry Kuekes

The movie "Mary Poppins" featured an impressive all-purpose word: supercalifragilisticexpialidocious. This month's essay is about an orchid term which, if not quite as long, is at least a real word: super-resupinate. What does it mean? That's somewhat of a long story. Let me start with a description of an orchid flower. The most conspicuous part of most orchid flowers is the labellum or lip, which is usually enlarged, frilled, differently colored, or otherwise distinctive from the rest of the petals. Examples include the tubular frilly lip of many cattleyas and the slipper or pouch of lady-slippers and paphiopedilums.

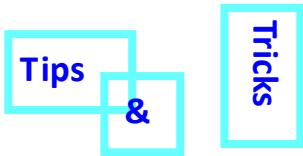
Cattleyas and paphs, like most orchid flowers, have the lip at the bottom of the flower. Often magazine and book editors get this confused, printing upside-down pictures of orchids with the lip at the top. I guess it's because they aren't used to dealing with the issue of what's right side up with other flowers such as lilies.

But there are orchids which grow with the lip at the top. The picture below of *Encyclia radiata* is not upside down. It really grows that way, making clusters of flowers with the lips uppermost.

Now, when scientists observed what happens when orchid buds open into flowers, they noticed something interesting. Inside the bud, the lip actually always starts out uppermost, toward the top of the bud. Then, as the bud matures, its stem twists around through 180° until, when the bud opens, the lip is at the bottom. This process is called resupination, and orchids that do this are called resupinate (pronounced reh-SOUP-in-ate). All familiar orchids with the lip on the bottom are resupinate, including cattleyas, dendrobiums, phalaenopsis, and many others.

Orchids such as *Encyclia radiata* with the lip at the top do not undergo this twisting. In the bud, the lip starts out at the top and stays at the top when the bud opens. Such orchids are called non-resupinate.

However, there is a final "twist" to the story. In a few orchids, the bud twists through 360° so that the lip starts at the top, turns all the way around, and ends up on top again when the flower opens! Such orchids are called super-resupinate, and now you know what the word means, in case you want to work it into a casual conversation.



Coffee Filter ~ During repotting, place a new coffee filter in the bottom of the pot to prevent the fir bark from washing out when you water your orchid.
(This tip provided by Mrs. J.E Kelseo Avery TX, AOS Bulletin, May 1993)

As close as possible ~ Growing under fluorescent lights? Place your plants as close as possible to the tubes, within a couple inches if possible. If growing several plants of different heights under one set of lights, prop up smaller plants on inverted pots to get them closer to the tubes.

Got Gnats? ~ This time of year members often report the presence of many small flying bugs around their orchids. These are fungus gnats that live in the fir bark. They are usually present if conditions are humid and damp or if the bark mix has begun to deteriorate. They are not harmful to your orchids but they are a nuisance. To get rid of them soak the plants' bark mix with a pesticide. You may have to apply several applications to eliminate them because the adults will be killed with the first dose but the eggs will hatch out in a few days and require another dose.

Solution to the Dec. 2010 Word Search Trivia Challenge:

Orchids Wordfind II

- by WordFind for Crossword Maker 98

ALLIANCE	BACKBULB	BEE	BIFOLIATE	DRACT	BREEDER
CHESHIRE	COLLECTION	CORSAGE	DORSAL	EQUITANT	EYE
FIR	FOOTCANDLE	GERMINATE	GRANDIFLORA	GREX	HABITAT
HUMIDITY	KEIKI	LIP	MERICLONE	MINIATURE	POD
FOLLINATOR	PROGENY	SHEATH	SHOW	SPIDER	SUN
VANILLA					



Gordon W. Dillion

January Checklist

By James Rose and Ned Nash

Winter can be the most difficult season for the culture of orchids. It is not a time for active growth, though it may be a time for many orchids to bloom. An attractive display of flowers often distracts the grower enough for him to falsely assume that nothing could ever be wrong with his plant. Sadly, this is the season that can present orchid fanciers with a multitude of problems.

During winter, the days are shorter. Add to this rather obvious change in growing condition clouds that obscure what little sun there is during the day, and quality of flowers is sure to be affected. Those utilizing supplemental lights during overcast weather have the situation under control, but greenhouse, windowsill and outdoor growers will be left to deal with spotting of flowers, weak color in reds to oranges, and a new challenge in monitoring proper watering schedules.

This is also the most critical time of year for cold damage. Surprise freezes have wiped out growers in California and Florida and instilled new appreciation for watching the weather reports in those areas. Greenhouse growers in much of the country should test to be sure that their heating systems are in the best possible condition before they are actually needed. The addition of an alarm system has put many orchid minds at ease as well.

Space heaters and home furnaces create their own set of problems. They will be running a lot more, so will really dry out the air. When humidity is too low, flower-keeping quality will be impacted, and dry air is also a common contributor to bud drop. Long-term exposure to dry conditions will severely damage plants.

In many parts of the country, the rainy winter months will bring armies of the orchid grower's worst enemy: slugs and snails. Have plenty of granular bait on hand and do not put off using it. (Pellet-form slug bait is less effective; be aware it is toxic and attractive to pets). These wet conditions can also bring on an outbreak of *Botrytis*, a fungus that causes those small brown spots that always seem to favor your best flowers.

Keep the growing area drier at night by watering in the morning to prevent rot. Spray an appropriate fungicide if necessary. Always remove old flowers because they act as hosts for *Botrytis* spores. *(Reprinted from AOS Bulletin, Jan. 1994)*



- ☐ **Angraecoids** Most species will be quite dormant this time of year, which leaves them susceptible to root rot from overwatering. Keep fairly warm and a little on the dry side until new roots emerge.
- ☐ **Calanthe** Divide and repot the tropical-deciduous types (grouville, St. Aubin and Rubens). Remove healthy one- to two-bulb divisions as growths begin to appear. Pot in a highly organic mix (1/2 part fine bark and 1/2 organic materials, such as peat, ground sphagnum, rotted manure).
- ☐ **Cattleya** Long nights, short days and cool temperatures make this the low point of the growth year for cattleyas. Watering and feeding needs are at a minimum. Give maximum light and watch for emerging buds from those that flower from winter into spring. Stake spikes for best presentation.
- ☐ **Cymbidium** Now is the peak flowering season for cymbidiums, during which time the plants require fertilizer with lower nitrogen (the first of three numbers of the ratio on a fertilizer-package label). Stake inflorescences to promote attractive flower arrangement. Bait for slugs and snails.
- ☐ **Lycaste** Decrease the watering to slightly dry out the plants. The leaves will drop on the deciduous yellow varieties. Watch for developing inflorescences on the lead (newest) pseudobulbs.
- ☐ **Paphiopedilum** Standard hybrids are in about the middle of their blooming season, so enjoyment is the key word. They still require watering and light feeding, especially if they are in the drier home environment. Mottled-leaved Maudiae types require less water and food than at other times. More light will help set buds for the spring and summer bloom season. This is a good time to rest mature strap-leaved types by reducing water and food, while keeping light levels higher.
- ☐ **Phalaenopsis** Moth orchids show little, if any, active growth, owing to cool temperatures and low-light conditions. Watch watering carefully to preserve health of roots. This season's inflorescences are probably well developed by now, and should have already been staked for best support and presentation. Prevent cold drafts from reaching plants.

___ Prepared by James Rose and Ned Nash.
Reprinted from AOS Bulletin, Jan. 1994



***Cynodes Wine Delight 'J.E.M.'* FCC/AOS
(*Cynodes lehmannii* x *Cynoches sinuate*
x *Marmodes*)**

This spectacular plant brought to December Show Table by Judy Becker.

Trivia Fun



“AOS Judges often face formidable tasks, but we truly appreciate Gene Casey’s mountaineering skills as he measures the flowers of Nico Lek de Tachinville’s awarded *Renanopsis* Lena Rowold ‘Madge Fordyce’ CCM/AOS (85 points), a cross of *renanthera storiei* and *Vandopsis lissochiloides*.”

(Reprinted from the Bulletin, American Orchid Society, June 1975)

J & L Orchids' January Thaw Sale

Everything is 20% Off!! *

January 22—30, 9—4 each day

Lots of New Plants

We have been working hard to propagate plants to make sure we have an exciting selection of unusual species and hybrids. Some special plants are in limited quantities and available ONLY at the sale!

Best Savings of the Year!

Come chase away the Winter Blues

www.jlorchids.com

J & L Orchids, 20 Sherwood Rd., Easton, CT 06612 (203) 261-3772

* at greenhouse only

22nd Annual Cape & Islands

ORCHIDSHOW

January 29-30, 2011

Orchid Odyssey

Sat. & Sun. 9-5

Admission:

\$8 Single Day

\$12 Two Day Pass

The Resort & Conference Center at Hyannis
135 Scudder Ave. (West End Rotary)

Photo Courtesy of ArtEmbroidered.com



Winter Show, February 10-13, 2011

**Dearborn Market, 2170 Rt 35 south,
Holmdel, NJ 07733**

10am to 6pm Thursday, Friday and Saturday

10am to 4pm on Sunday



Held in Dearborn Market's 10,000 square foot greenhouse, the Deep Cut Orchid Society Winter Show is the largest orchid show and sale in New Jersey. It is an AOS sanctioned show and hosts many displays from orchid societies and professional growers from the area. This is the time of year when orchids are at the blooming peak and you will see hundreds of beautiful orchids covering a wide variety of orchid genera. And it's **Free!!** There will be free lectures on Saturday and Sunday, free group guided tours throughout the week, and information on growing orchids. The show also includes a large sales area of the growers attending the show.

Drop in and brighten up a dreary February day with the sights and smells of beautiful and colorful orchids. It's **FREE!!** Ample parking and food on the premises.

**MID—HUDSON
ORCHID
SOCIETY**



SPRING 2011

ORCHID SHOW & SALE

Saturday, March 12, 2011

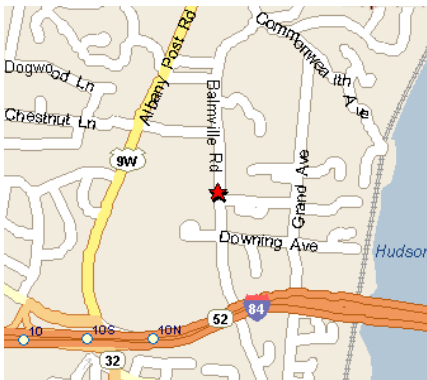
11:00 AM to 3:00 PM

Union Presbyterian Church, 44 Balmville Road, Newburgh, NY

FREE ADMISSION

Education for beginners at 1:00 PM

Orchid experts available all day for your questions



DIRECTIONS FROM INTERSTATE 84

Take Interstate 84 to exit 10
Proceed north on Route 9 W and make a right at the traffic light onto Chestnut Street (there is an M&T Bank branch on the west side of Route 9W at this intersection; it is less than a mile once you get off at exit 10). Proceed to the stop sign and make a right onto Balmville Road.
Proceed approximately 1/4 mile and make a left onto Beech Street. The parking lot is on the left.
Entrance to the community center is off the parking lot.



For further information, call
845-292-1000

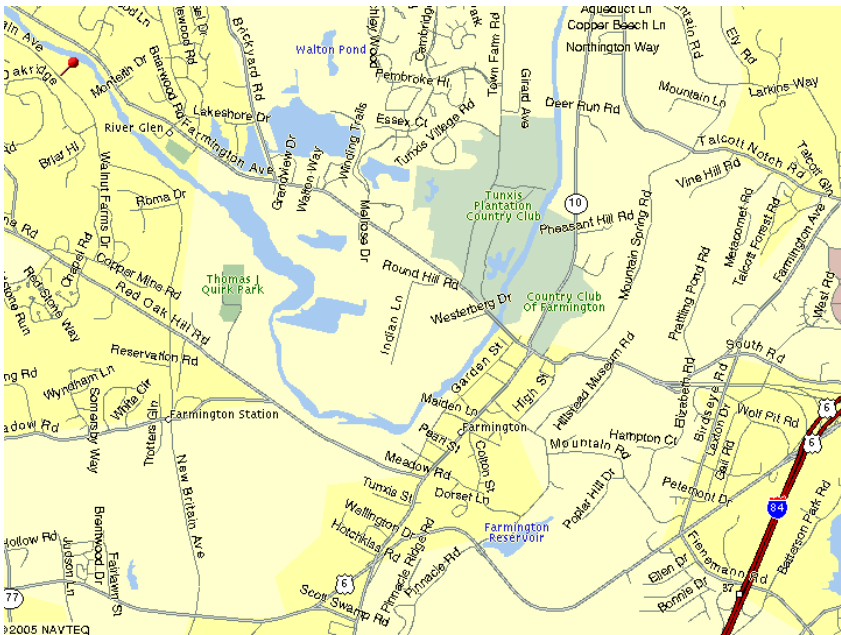
Visit our website at www.mhos.us.com
The MHOS is an affiliated Organization of the American Orchid Society

Directions to Farmington Senior Center 321 New Britain Avenue, Unionville, CT

From the North or East: Take I-84 west from Hartford to exit 38 (Rt. 6). Proceed west. Turn right onto New Britain Ave. Farmington Senior Center is at 321 New Britain Avenue next to the police station.

From the South: Take Rt. 9 north to I-84 west. Proceed as above.

From the West: Take I-84 east to exit 37 (Fienemann Rd.). Turn left on Fienemann Rd., go over the highway, then turn left onto Rt. 6. Follow Rt. 6 west. Turn right onto New Britain Ave. Farmington Senior Center is at 321 New Britain Ave. next to the police station.



Connecticut Orchid Society Membership Application

Name: _____

Address: _____

Tel. # _____ E-mail: _____

(Information provided to the Connecticut Orchid Society is not sold, shared or given out)

Membership choice: *Single \$20/yr. ** *Family \$25/yr. **

Single Lifetime Membership \$200

Family Lifetime Membership \$250

Newsletter delivery preference: *U.S. Mail* *E-mail*

** Please include an additional \$10 fee for postage costs for U.S. mail delivery of your newsletter. E-mail delivery is free of charge, please provide your e-mail address above.*

At this time I would only like to receive the next three newsletters & directions to the meetings.

-----Fold Here-----

- *Complete the information required above.*
- *Tear this form out of the newsletter.*
- *Fold in half.*
- *Insert your check payable to : “Connecticut Orchid Society”, for membership amount.*
- *Tape on three sides.*
- *Mail to COS (Address is printed on the back of this form) .*

Membership includes the monthly COS newsletter, monthly meetings Sept. through June with a featured speaker or educational activity, a vote at the annual election of the Board of Directors, opportunities to volunteer for many exciting orchid related activities, and COS sponsored field trips, clinics & shows. Join us!! You’ll be glad you did.

First
Class
Stamp
Here

***Connecticut Orchid Society, Inc.
c/o Mary Rampone, Membership Chair
53 Barbara Lane
Woodbury, CT 06798***

